

BATTERIE

# Unibat

serie VRLA-SLA



Le batterie UNIBAT serie VRLA-SLA utilizzano una reazione chimica interna a “ricombinazione” (VRLA) che minimizza la fuoriuscita di gas tipica dell’elettrolita liquido e consente quindi rischio nullo di sversamento accidentale dell’acido liquido ed è quindi sicuro per utilizzo in prossimità di persone e di apparati elettronici, adatto soprattutto in applicazioni di potenza in climi rigidi.

UNIBAT VRLA-SLA batteries use an internal chemical reaction based on recombination technology (VRLA) which reduces the gas emissions typical of liquid electrolyte and grants no risk of acid leakage; therefore, it is safe to be used near people and near electronic devices; it is highly recommended to use this kind of battery in high-power devices used in frigid weather conditions.

## BATTERIE / BATTERIES

ARTICOLO MODEL	VOLTS	CAPACITA' CAPACITY (ah)	MISURE / DIMENSIONS (mm)			PESO WEIGHT (kg)	LAYOUT	MORSETTO TERMINAL
			LUNGHEZZA LENGTH (L)	LARGHEZZA WIDTH (W)	ALTEZZA al polo TOTAL HEIGHT (H)			
CB1,3-6	6	1,3	97	24	57	0,29	1	T1
CB3,2-6		3,2	134	34	66	0,67	1	T1
CB3,2-6H		3,2	66	33	103	0,57	1	T1
CB4,5-6		4,5	70	47	106	0,81	5	T1
CB7-6		7	151	34	100	1,10	1	T1
CB10-6		10	151	51	100	1,57	1	T1
CB1,2-12	12	1,2	97	43	58	0,57	3	T1
CB1,9-12		1,9	178	35	66	0,87	1	T1
CB2,3-12		2,3	178	35	66	0,96	1	T1
CB5-12		5	90	70	107	1,45	1	T1
CB7-12		7	151	65	99	2,18	4	T1
CB9-12		9	151	65	99	2,45	4	T1
CB9-12UPS		9	151	65	99	2,45	4	T2
CB9-12C CICLICA/CYCLIC		9	151	65	99	2,50	4	T2
CB12-12		12	151	98	101	3,60	4	T1
CB13-12C CICLICA/CYCLIC		13	151,5	99,5	97	4,00	4	T15-1
CB18-12		18	181	77	167	5,50	2	T3
CB20-12C CICLICA/CYCLIC		20	181,5	77	170	6,50	2	T15
CB25-12		25	166	175	125	7,20	3	T3/T12
CB40-12C CICLICA/CYCLIC		40	197	166	170	14,10	2	T6
CB55-12		55	229	138	211	16,20	1	T6
CB65-12		65	348	167	178	19,20	1	T6
CB100-12	100	330	173	220	30,40	1	T11	
CB100-12H	100	305	168	213	27,50	1	T6	
CB200-12	200	522	240	224	59,80	3	T11	

## APPLICAZIONI / APPLICATIONS

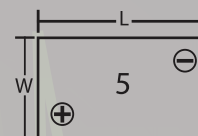
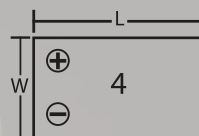
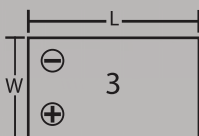
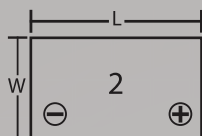
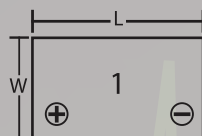
- Segnaletica per aeromobili
- Sistemi di alimentazione DC
- Impianti e attrezzature elettroniche
- Aircraft signals
- DC power supply
- Electronic apparatus and equipments
- Luci di emergenza
- Segnaletica per ferrovie
- Sistemi di alimentazione di emergenza
- Emergency light
- Railway signals
- Emergency backup power supply
- Sistemi di controllo automatico
- Sistemi di allarme e sicurezza
- Sistemi di alimentazione per le comunicazioni
- Sistemi UPS (gruppo statico di continuità)
- Auto control systems
- Alarm and security systems
- Electric Power Systems (EPS)
- Communication power supply
- Uninterruptable Power Supply (UPS) systems
- Sistemi EPS (sottosistema di alimentazione elettrica)

### APPLICAZIONI CICLICHE / CYCLIC APPLICATIONS (CB9-12C / CB13-12C / CB20-12C / CB40-12C)

- Apparecchiature elettriche
- Sistemi di allarme
- Power bank
- Electric tools
- Fire Alarms
- Power bank
- Golf trolley e Golf Car
- Giocattoli elettrici
- Sedia a rotelle
- Golf trolleys and golf cart
- Electric toys
- Wheelchairs
- Tosaerba
- Luci elettriche
- Apparecchiature mediche
- Lawn mowers
- Electric lights
- Medical equipments
- Veicoli per mobilità assistita (bici, hoverboard, ecc)
- Strumenti e luci portatili
- Walking assist device (bike, hoverboard, etc)
- Portable apparatus lights and instruments

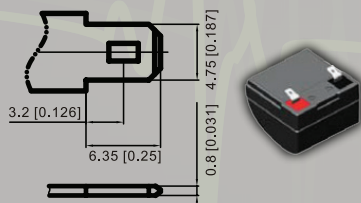


### LAYOUT / LAYOUT

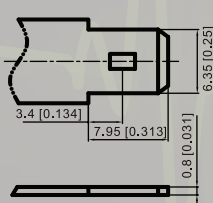


### MORSETTI / TERMINAL

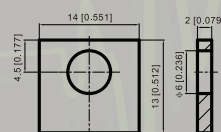
Terminal T1



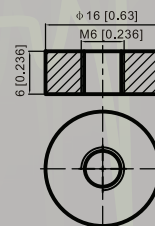
Terminal T2



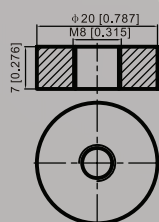
Terminal T3



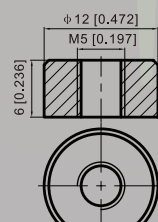
Terminal T6



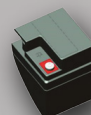
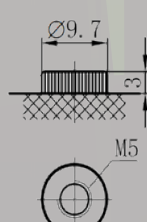
Terminal T11



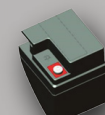
Terminal T12



Terminal T15



Terminal T15-1



### CARATTERISTICHE / TECHNICAL DETAILS

- ➔ **Utilizzo di tecnologia a ricombinazione di ossigeno: senza manutenzione**  
Use of oxygen recombination technology: maintenance-free
- ➔ **Materiale ABS: maggiore resistenza della cassetta della batteria**  
ABS material increases the battery box strength
- ➔ **Lega di PbCaSn per le griglie delle piastre: meno fuoriuscita di gas, autoscarica inferiore**  
PbCaSn alloy for plate grids: less gas emissions, less self-discharge
- ➔ **Materie prime di altissima purezza: assicurano un basso tasso di autoscarica**  
High purity raw materials ensure a low self-discharge rate
- ➔ **Separatori AGM di alta qualità: cicli di vita estesi e prevenzione dei micro cortocircuiti**  
High quality AGM separator: extend cycle life and prevent micro short circuit
- ➔ **Terminali in rame rivestiti d'argento (Terminale T1, T2), terminali con inserti in ottone e terminali al piombo**  
Silver-coated copper terminals (T1, T2 terminals), terminals with brass inserts and lead terminals improve the electric conductivity

— BATTERIE —

# Unibat



[www.unibatitalia.com](http://www.unibatitalia.com) 

 @batterieUNIBAT  Unibatbatterie  unibatbatterie

SAMAUTO S.p.A. - Via Lorenzo Larocca 5 - Z.I. - 70132 Bari - ITALY  
+39 080 5052901 - [info@unibat.it](mailto:info@unibat.it)

